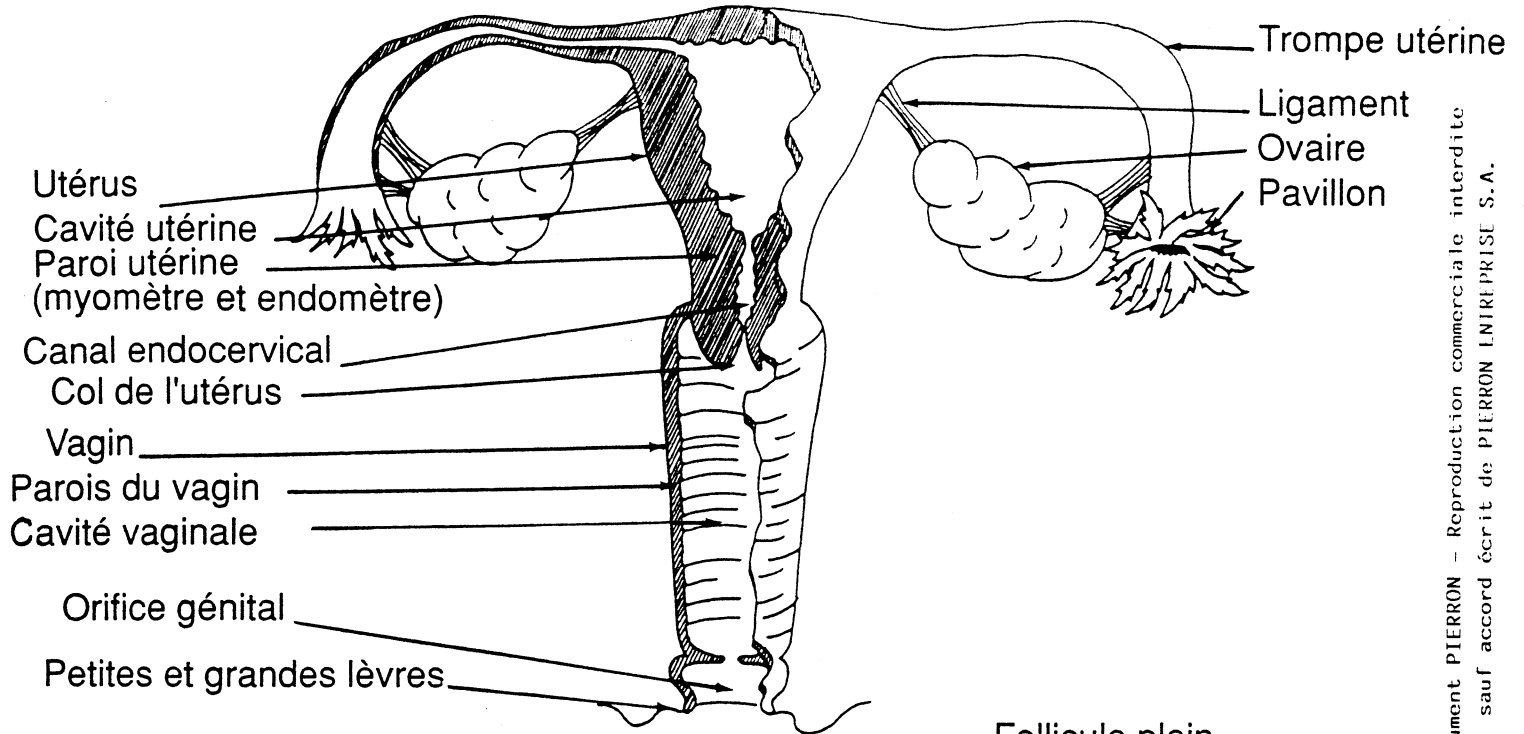
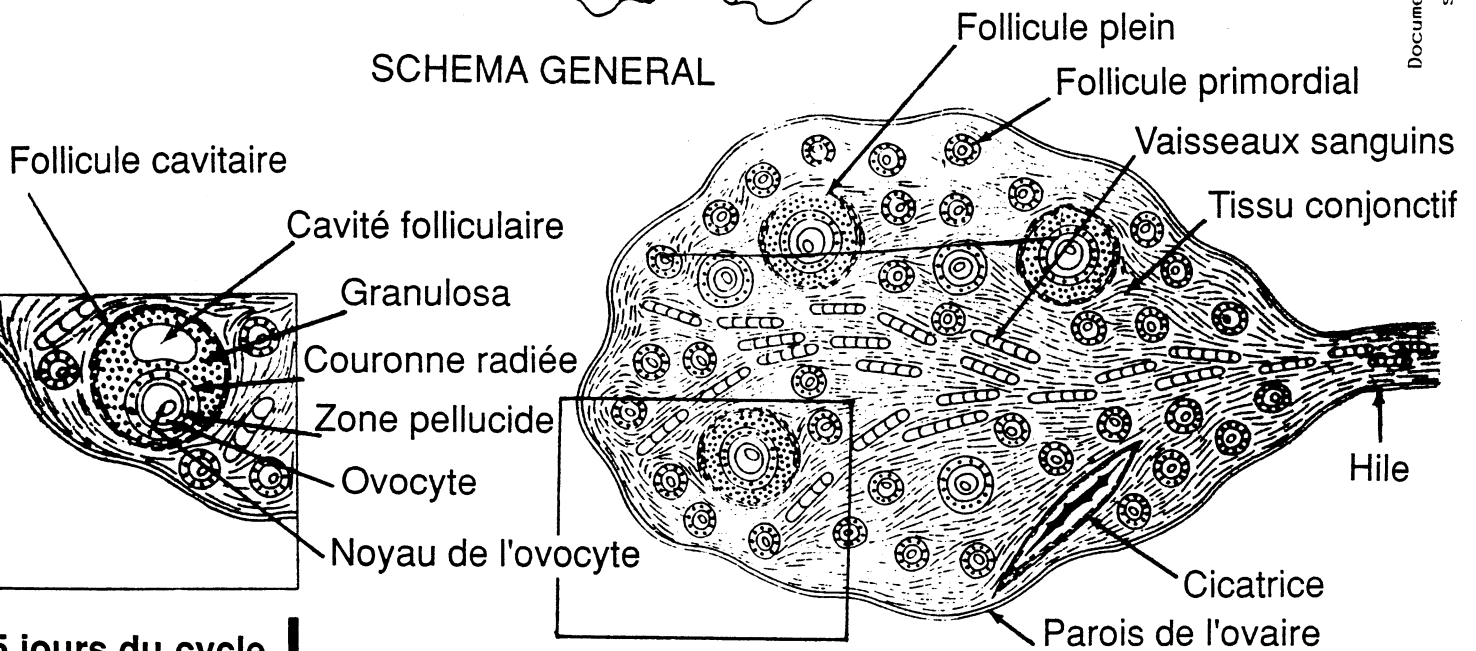


L'APPAREIL GENITAL DE LA FEMME



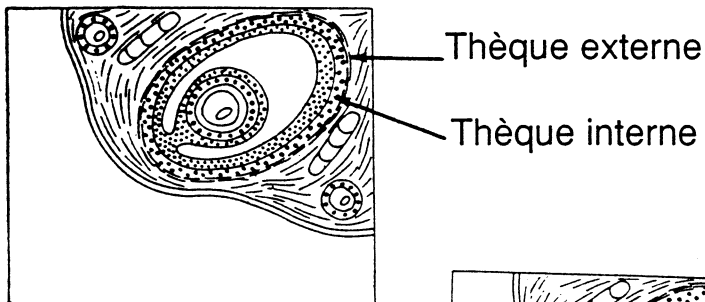
Document PIERRON - Reproduction commerciale interdite
sauf accord écrit de PIERRON ENREPRISE S.A.

SCHEMA GENERAL

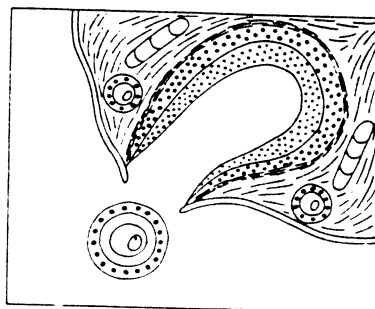


Coupe d'ovaire en début du cycle

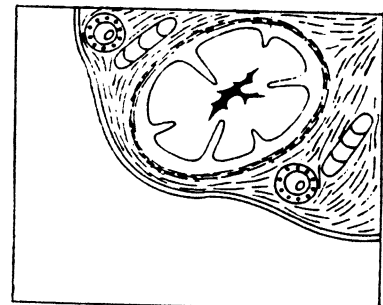
A 5 jours du cycle



A 11 jours du cycle



A 14 jours : l'ovulation



A 20 jours : le corps jaune

LE CYCLE OVARIEN